

(Wilson, J., 2009c)

Tiroiro Te Ara

View Te Ara In
English Maori

Rapu

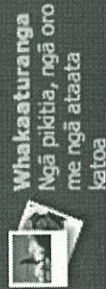
47 km GERALDINE 65 km WERCARGILL
118 km CAPE REINGA 38 km
29 km MARAHAU

Anei rā koe: Te Ara Home > Rohe > Canterbury

Canterbury region

Kei tēnei kōrero:

- Overview
- Geology
- Landscapes
- Weather and climate
- Plants, animals and conservation
- Discovery and settlement
- Agriculture before 1900
- Agriculture after 1900
- Industry
- Transport
- Politics and government
- Social institutions
- Christchurch
- People
- The arts
- Sport and leisure
- Facts and figures
- He Rauemi Anō



Whakaaturanga
Ngā pikitia, ngā oro
me ngā ataata
katoa

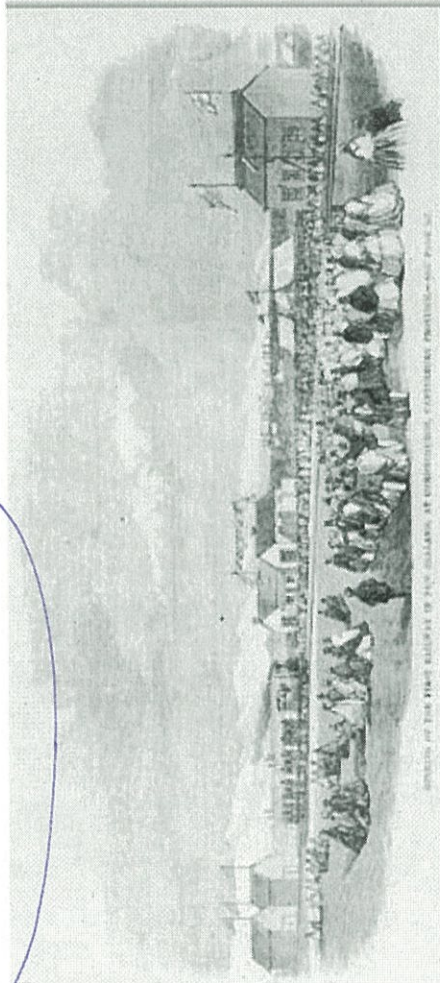
He kōrero anō mō ...
Canterbury

Ētahi atu... Mahi

Back to Story

WHATI MURI

New Zealand's first public railway



New Zealand's first public railway

This engraving, published in the *Illustrated London News* in 1864, depicts the 1863 opening of the railway linking Christchurch with Ferrymead. It was the first public railway, not just in Canterbury but in New Zealand.

Whai muri

Alexander Turnbull Library
Reference: PUBL-0033-1864-241
Wood engraving by R. S. Kelly

Permission of the Alexander Turnbull Library, National Library of New Zealand, Te Puna Matauranga o Aotearoa, must be obtained before any re-use of this image.



Canterbury region

New Zealand's first public railway



This engraving, published in the *Illustrated London News* in 1864, depicts the 1863 opening of the railway linking Christchurch with Ferrymead. It was the first public railway, not just in Canterbury but in New Zealand.

About this item

Alexander Turnbull Library

Reference: PUBL-0033-1864-241

Wood engraving by R. S. Kelly

Permission of the Alexander Turnbull Library, National Library of New Zealand, Te Puna Mātauranga o Aotearoa, must be obtained before any re-use of this image.

How to cite this page: John Wilson. 'Canterbury region', Te Ara - the Encyclopedia of New Zealand, updated 2-Mar-2009

URL: <http://www.TeAra.govt.nz/en/canterbury-region/10/1>