

Quote (Tiroa Tehape, 2005)

2005

[+] WELCOME TO TIROA TEHAPE



As at date of publication Archive

[Home](#)

[Trustees](#)

[History](#)

[Rereahu Farms](#)

[Rereahu Marae](#)

[Plans & Projects](#)

[Gallery](#)

[Newsletter](#)

[Contact Us](#)

[Links](#)

COMING EVENTS

Work in Progress...

Te Miringa Te Kakara Marae

(Translation: A Caressing Fragrance)

Te Miringa Te Kakara was a very old marae and papakainga and was the site of the last known whare wananga of Tainui (Maori University). The marae was built by Te Ra Karepe and others from Raukawa, Rereahu, Maniapoto, Tuwharetoa, Whanganui, Waikato , Te Arawa, Taranaki, and Tairāwhiti, following the directions of an old Kuia called Ngaharakeke of Ngati Pare who described a particular shaped house that appeared in her dreams.



Te Miringa Te Kakara was completed in the mid 1850s and erected entirely without nails its roof was made of Totara Bark. The marae's four doors are placed at the cardinal points of North, South, East and West.



Some of the subjects taught at the whare wananga covered Astronomy, Genealogy and Natural Medicine, to name a few.

This unique building however was destroyed by fire in 1982.

Recently a concept to rebuild was presented to the Marae Trustee's to consider.

[Back to Top](#)

Te Hape Marae

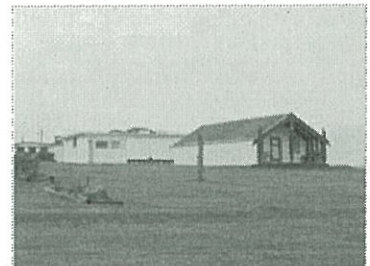
Te Hape Marae (Hape-Kaitiaki also a Tupuna)

Built at the turn of the century, by Rereahu Maniapoto after a major shift from a previous Marae.



Te Hape Marae has a communal meeting house named Te Kahatuatini and a dining room called Ngaurumahora. The marae also once had a Temple named Te Temepara Tapu o Manuwhiri. However it was in a state of disrepair and with safety an issue the temple was demolished 1980s.

In the early milling days Te Hape marae was very well populated and was surrounded by a number of individual family homes.



Te Hape marae is located on Te Hape farm.

[Back to Top](#)

Mangapehi Marae

Mangapehi Marae Papakainga, Rereahu-Maniapoto.

Wehi Te Ringitanga and his kuia Te Huinga Waikohika



were instrumental in the establishment of this Marae. Prior to the construction of the marae a little house named Potuterangi was constructed and served as accommodation for the builder of the marae, Mahuri Tawhana.

Mangapeehi marae is located between Te Kuiti and Bennydale.



[Back to Top](#)

Te Ihingarangi Marae

Te Ihingarangi Marae Papakainga, Waimiha – Ngati Teihingarangi, Rereahu.

Panukunuku mai ki te taha ote ara o TURONGO - Teihingarangi were encouraged to shift close to the Railway Line known as

The pathway of Turongo.

The old Marae Otamatea was situated at least two or three hours walk away, might have been further on the farm now known as Te Tarata.

Te Ihingarangi is located at the southern end of the small settlement of Waimiha between Benneydale and Ongarue.



[Back to Top](#)

Te Koura Marae

Te Koura Marae Papakainga, Ngati Urunumia, Ngati Pahere, Rereahu, Maniapoto.

Home of Rangawhenua Tawhaki it is said a Tohunga of immense knowledge

Rangawhenua also known for the proverb (kia hora te marino, kia whakapapounamu te moana, ka tere te karohirohi)

The meeting house is named Te Karohirohi.

Te Koura marae is located on the side of the highway between Ongarue and Taumarunui.



[Back to Top](#)

Te Ahoroa Marae

(Translation: The Long Thread)

Ko nga aho o te harakeke, ona roa, me te pai mo te raranga kete whariki

Ko Rangitoto te maunga

Ko Waipa me Mangarapa nga awa

Ko Te Whiu te tupuna

Ko Rereahu te rangatira

Mai te maunga 'Hikurangi' ki 'Mangaronga' awa ka piki e nga puke kia kawe nga awawa, ki 'Otewa', ki 'Turamoe', ki 'Owawenga', ki 'Te Ahoroa', ki 'Te Hape', ki 'Pureora' maunga, ka matakitaki atu ki 'Miringa Te Kakara' te nohonga o nga whare wananga o 'Raukawa', 'Rereahu' me te tamaiti mokopuna 'Maniapoto'.



[Back to Top](#)

[OUR PEOPLE](#) | [HISTORY](#) | [REREAHU FARMS](#) | [REREAHU MARAE](#) | [PLANS & PROJECTS](#) | [GALLERY](#) | [NEWSLETTER](#) | [LINKS](#)

© Copyright 2005 Tiroa Tehape

Site Designed & Powered By Certain Concept Ltd

